

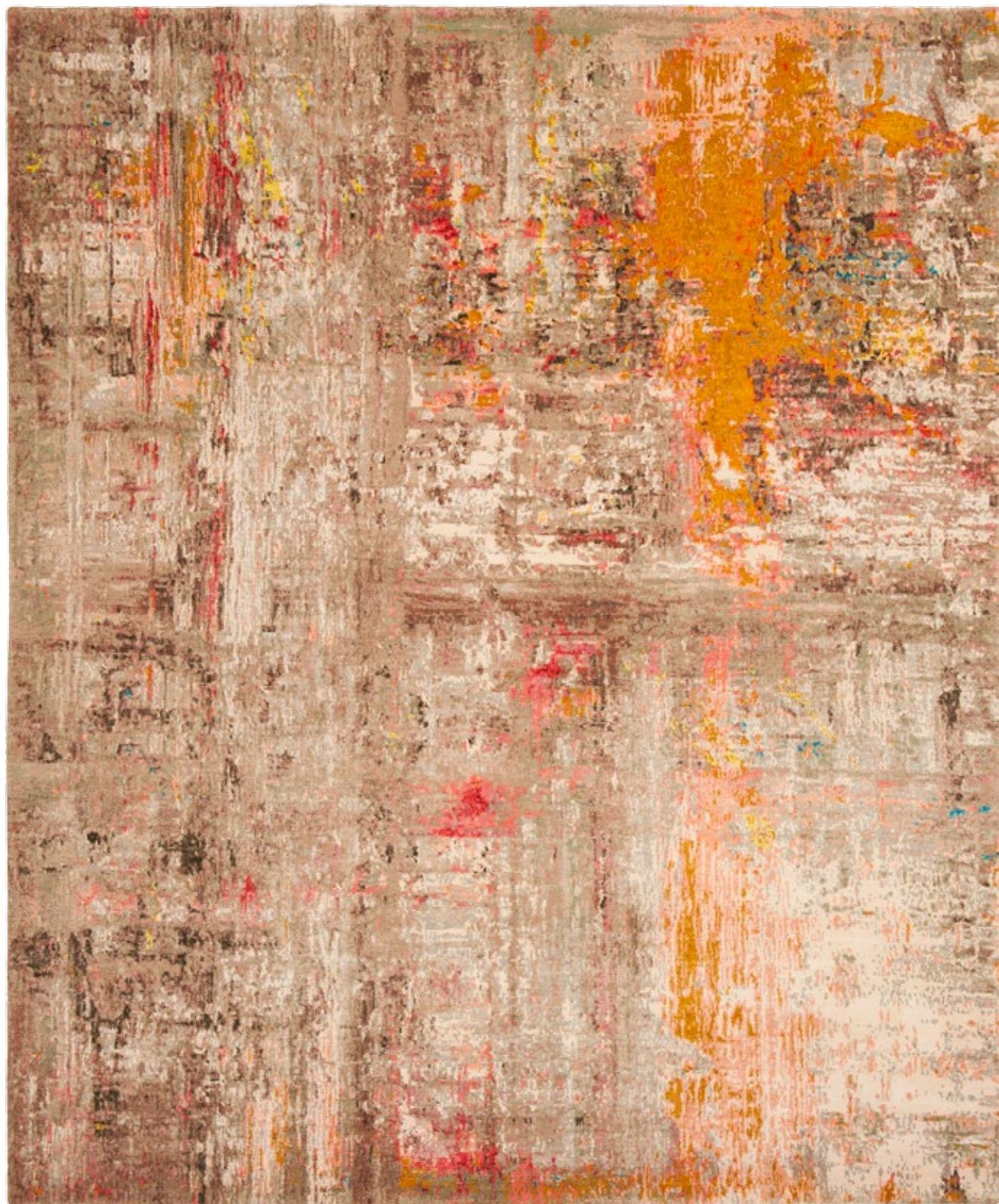
JAN ■
KATH

ART WOR KS

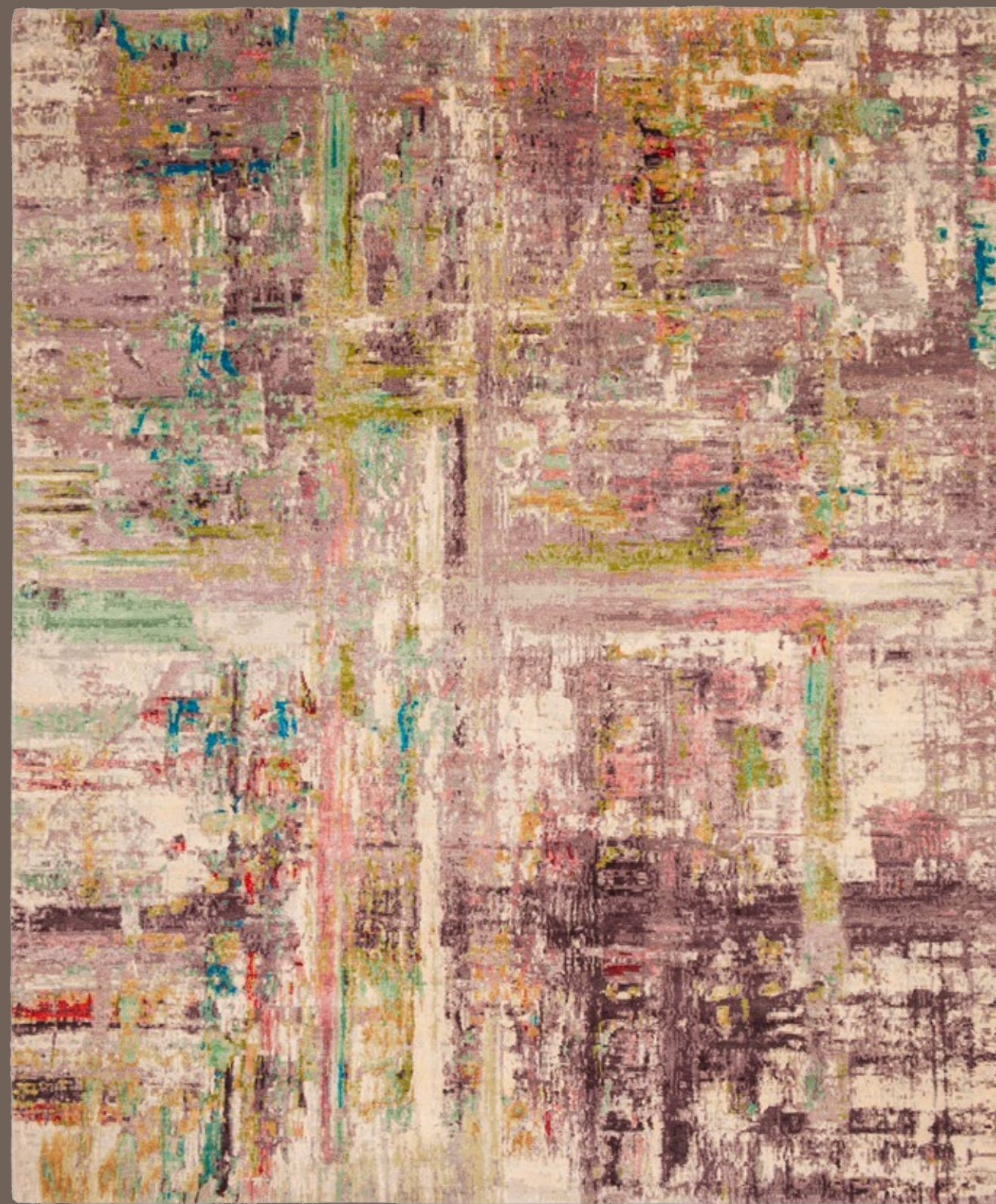
**ABSTRACT RUG ART
BY JAN KATH**

RICH COLOR PIGMENTS, ARRANGED ON TOP OF ONE ANOTHER LAYER BY LAYER ON A CANVAS, APPEAR TO FORM THE BASIS OF THIS COLLECTION. OVER THE COURSE OF TIME THE COLORS ARE ERODED, SCRAPED OFF, AND WIPED AWAY. TIME IS THE ARTIST BEHIND THESE WORKS. A TOUCH OF WHITE PEERS THROUGH THE TOP LAYER; THE PINK UNDERNEATH SHIMMERS THROUGH ONLY VERY GENTLY. THE RED TONE BLAZES MORE CLEARLY ELSEWHERE AND SETS A BOLD ACCENT.

Jan Kath has transposed the profound color spectacle to the carpet. In the ARTWORK collection, wool is used to "paint" instead of a brush. What appears to the beholder to be random has actually been precisely specified by the designer in his template and can be perfectly reproduced by the experienced weavers in the workshops in Kathmandu. To reproduce the complexity of the design as precisely as possible, the weavers often change the material knot after knot. As such, up to 24 colors may be used in a single carpet. The material mix of the finest Chinese silk, Tibetan highland wool, and nettle fibers gives the carpets exceptional depth and expressive power. The abstract ARTWORK collection is a new, further enrichment in the design portfolio of Jan Kath. Like almost all collections, it goes without saying that alterations and adjustments of all kinds can be made depending on the project.



ARTWORK 23 ORANGE



ARTWORK 24 PURPLE



ARTWORK 22 BLUE



ARTWORK 1 GREEN GOLD





ARTWORK 3 PINK



ARTWORK 3 BLUE





ARTWORK 3 CHROME



ARTWORK 19 PALEPINK





ARTWORK 18 GREEN



ARTWORK 21 GREEN





ARTWORK 3 GREEN



ARTWORK 19 GREEN



ARTWORK 19 BLUE



ARTWORK 19 ORANGE



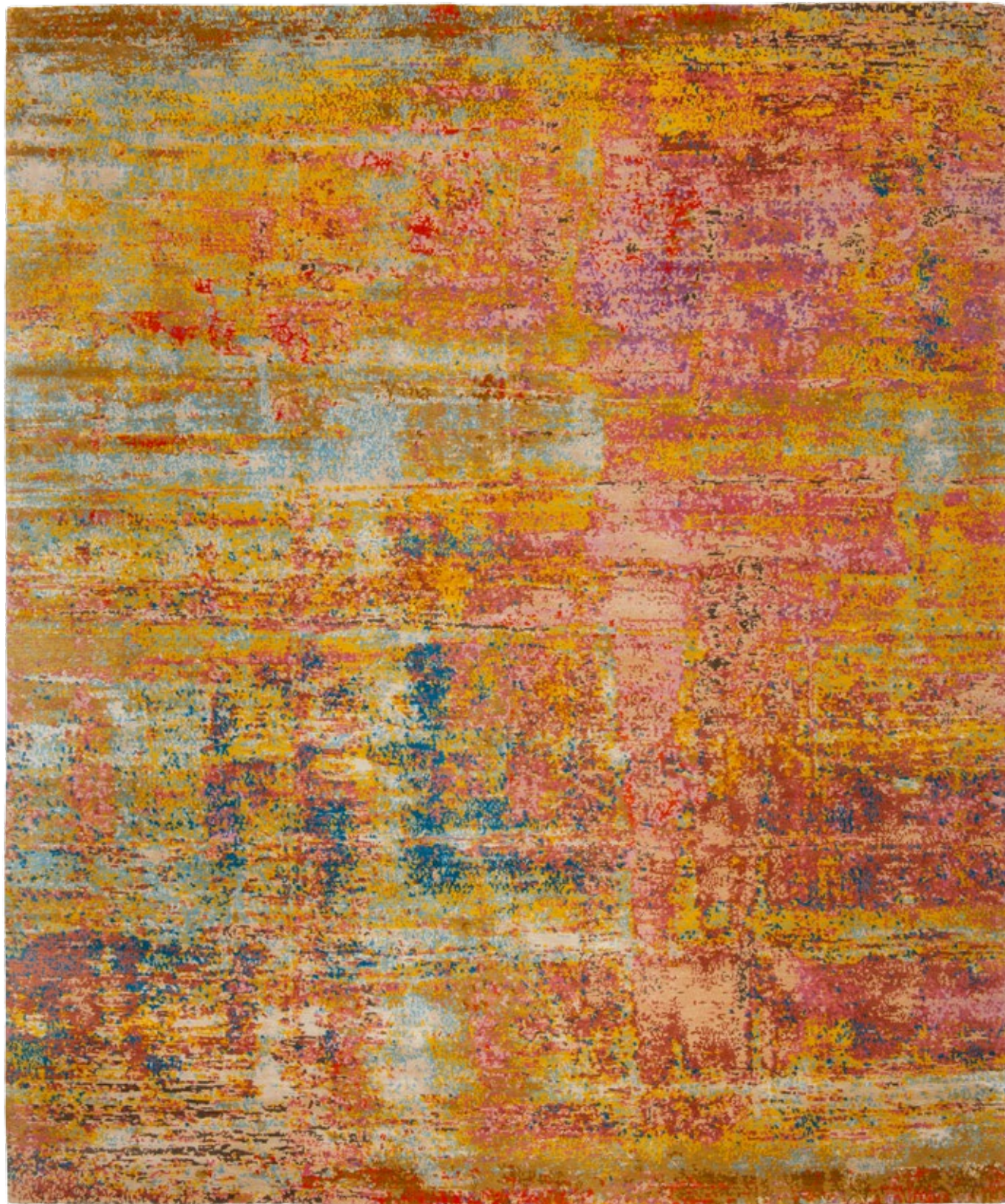


ARTWORK 17 COPPER



ARTWORK 21 BROWNGOLD





ARTWORK 18 PINK



FERRARA ARTWORK SPECIAL ROCKED ARTWORK 18 / WHITE SSW UP



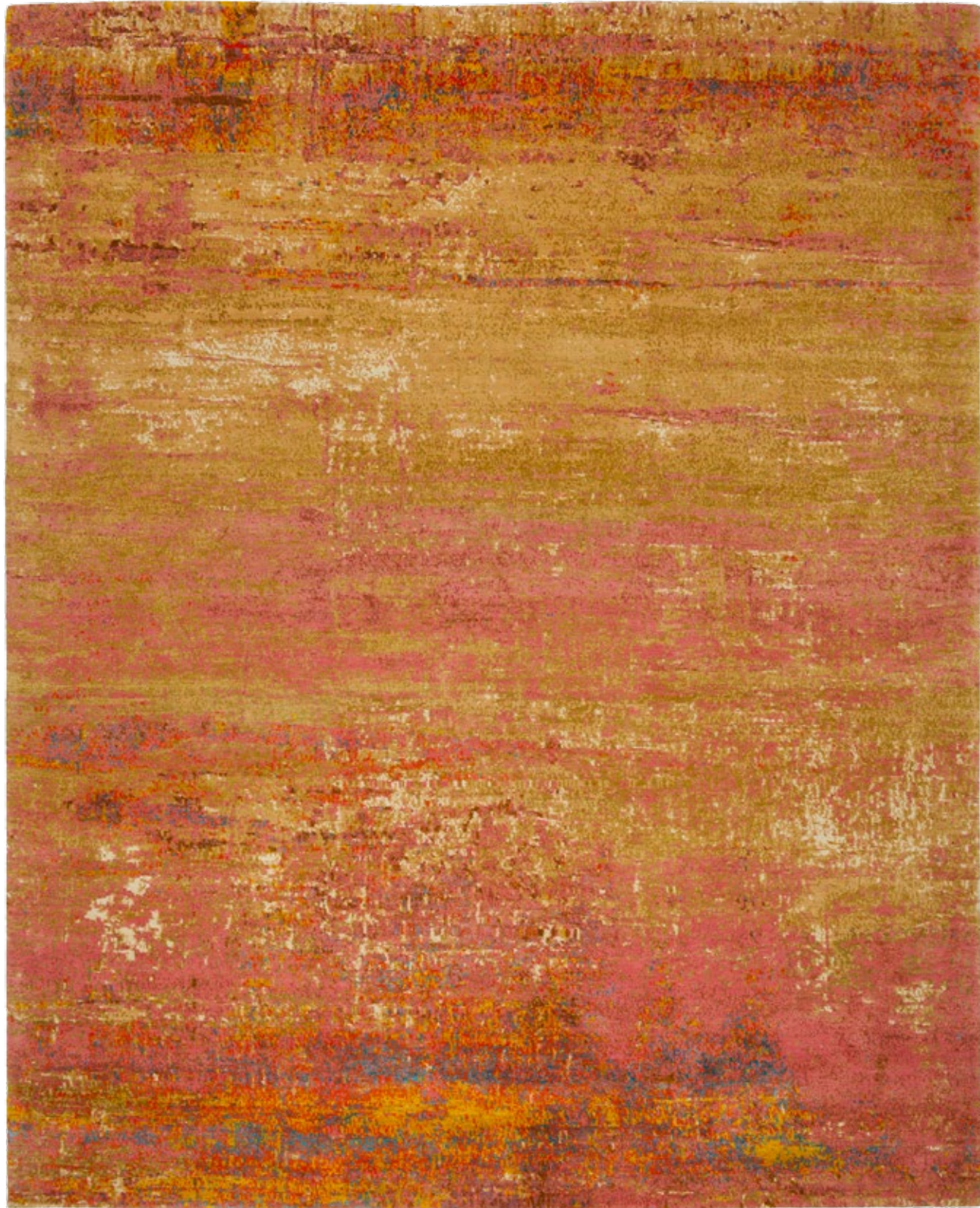


ARTWORK 17 PINK



ARTWORK 22 PINK

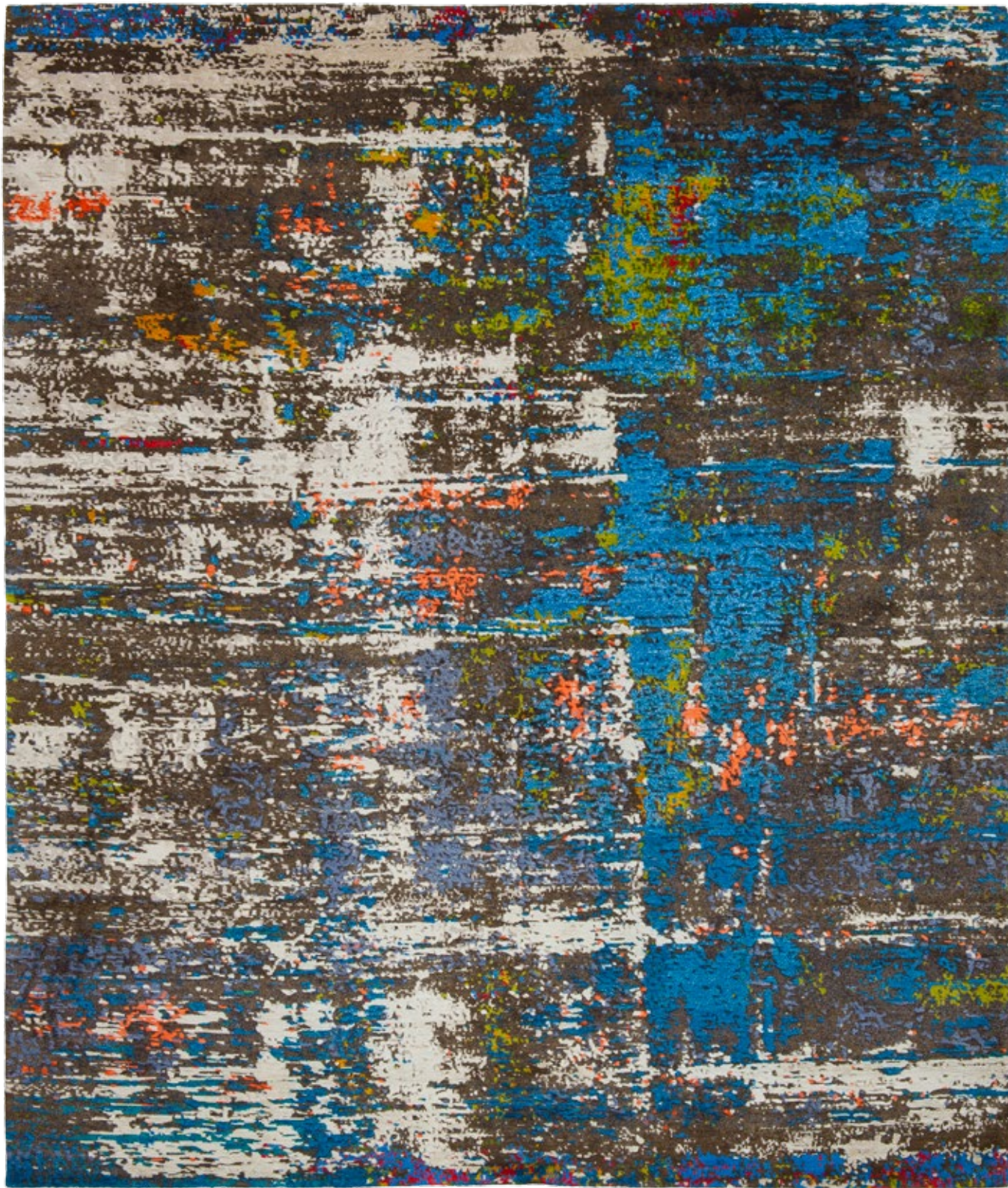




ARTWORK 19 PINK



ARTWORK 9 CHROME BROWN



ARTWORK 18 BROWN



ARWORK 19 BLUE RED





ARTWORK 8 CHROME



ARTWORK 9 CHROME RED



ARTWORK 8 BROWN



ARTWORK BORO 11 ARTWORK 8 / D 075 SSW UP



ARTWORK 19 WHITE



ARTWORK 19 BLACK



ARTWORK 26 BLUEGREY

PRESS CONTACT

GABY HERZOG
RUECKERSTRASSE 7 10119 BERLIN GERMANY
C: +49 (0) 163 776 70 53
GABYHERZOG@JAN-KATH.COM

INFO & PHOTO-DOWNLOAD

WWW.JAN-KATH.COM

**JAN KATH DESIGN GMBH HEADQUARTERS
JAN KATH SHOWROOM BOCHUM**

FRIEDERIKASTRASSE 148 44789 BOCHUM GERMANY
T: +49 (0) 234 941 23 44 F: +49 (0) 234 941 23 90
INFO@JAN-KATH.COM

JAN KATH STORE BERLIN

BRUNNENSTRASSE 3
10119 BERLIN-MITTE GERMANY
T: +49 (0) 30 48 49 60 90
INFO@JAN-KATH-BERLIN.DE

JAN KATH STORE COLOGNE

VENLOER STRASSE 16
50672 COLOGNE GERMANY
T: +49 (0) 221 94 967 940
INFO@JAN-KATH-KOELN.DE

JAN KATH STORE HAMBURG

AM SANDTORPARK 14
20457 HAMBURG GERMANY
T: +49 (0) 40 228 69 39 0 F: +49 (0) 40 228 69 39 09
INFO@HAMBURG.JAN-KATH.DE

JAN KATH STORE MIAMI

RUG EVOLUTION LLC 221 NW 23RD STREET
MIAMI, FL 33127 UNITED STATES
T: +1 786 558 4334 F: +1 786 558 4068
INFO@MIAMI.JAN-KATH.COM

JAN KATH STORE MUNICH

IM TAL 11
80331 MUNICH GERMANY
T: +49 (0) 89 21 36 230
INFO@BOEHLER.DE

JAN KATH SHOWROOM NEW YORK

KYLE & KATH LLC 555 WEST 25TH ST 2ND FLOOR
NEW YORK, NY 10001 UNITED STATES
T: +1 646 745 2555 F: +1 646 745 2554
INFO@NYC.JAN-KATH.COM

JAN KATH STORE STUTTGART

WILHELMSTRASSE 8B
70182 STUTTGART GERMANY
T: +49 (0) 711 518 90 350 F: +49 (0) 711 518 92 625
SHOP@STUTTGART.JAN-KATH.DE

JAN KATH SHOWROOM VANCOUVER

FINLAY & KATH INC. 505 RAILWAY STREET
VANCOUVER, BC V6A 1A7 CANADA
T: +1 604 254 5284 F: +1 604 254 5260
INFO@VANCOUVER.JAN-KATH.COM

CONCEPT & DESIGN

WWW.OKTOBER.COM

WWW.JAN-KATH.COM